

लक्ष्मीलक्ष्मी

Precision Watch Components | Since-2006



PRODUCT CATALOGUE

2025-2026 COLLECTION

QUALITY | INNOVATION | CUSTOMER SATISFACTION | PARTNERSHIP

MAHALAXMI INDUSTRIES



Managing directors

The company's commitment to excellence is a direct result of the visionary leadership of its Managing Director, Mr. Vishnu Prasad Sarkar. Under his stringent supervision, Mahalaxmi Industries operates with a focus on meticulous quality control.

Mr. Sarkar's leadership, combined with the strategic deployment of precise machinery, ensures the manufacturing of components that meet exceptionally high standards of accuracy and precision. This dual emphasis on industrial expertise and operational quality has been the foundation for the deep-seated trust the company has earned from its clientele and its enduring presence in the competitive watch parts market.

Company Profile

Mahalaxmi Industries is incorporated in 2006, with a dedicated mission to serve the nation's burgeoning watch industry.

The company's core purpose is to manufacture high-precision watch parts, actively supporting the "Make in India" initiative for domestic watch production.



Since its inception, Mahalaxmi Industries has been a dependable and consistent partner for watch manufacturers across the country.

It specializes in catering to the industry's complex needs by supplying essential watch components and providing crucial assisted support services.

This sustained commitment has allowed the company to foster long-term relationships and build a strong, trust-based reputation in the market.

TABLE OF CONTENT

01 **Top rings collection**
Page 4

02 **Dial rings collection**
Page 5

03 **Movement holders**
Page 6

04 **MGG sample**
Page 7

05 **Case collection**
Page 8

06 **Rings collection**
Page 9-10

07 **Strap collection &
other parts**
Page 11

TOP RINGS COLLECTION



TOP-1
37.00/31.00/1.5



TOP-2
RNS-19032024



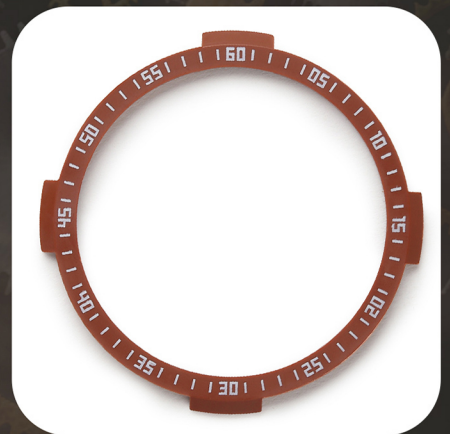
TOP-3
KIT TOP



TOP-4
40.00/26.60/3.5



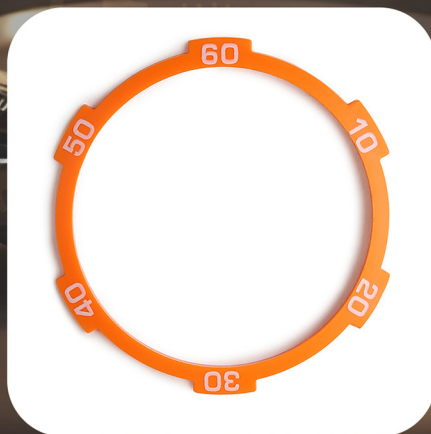
TOP-5
UM-FT



TOP-6
BLJ TOP



TOP-7
RNS 030723

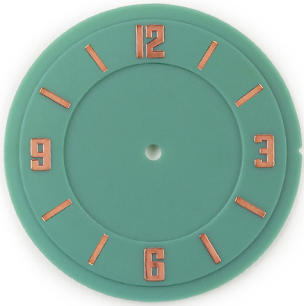


TOP-8
JNS-6 ARM



TOP-9
T-4 NEW

DIAL RINGS COLLECTION



DIAL-1
MTF POWDER GREEN



DIAL-2
PDL-101



DIAL-3
PDL-104



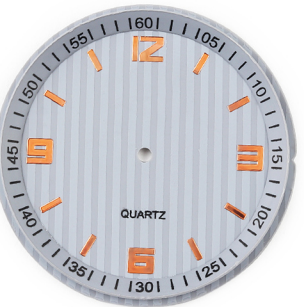
DIAL-4
SHIVAZM DIAL



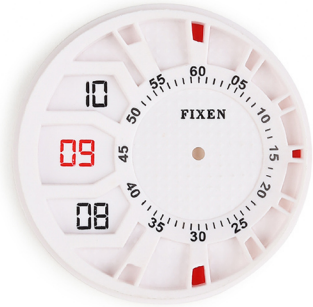
DIAL-5
DIAL-110124



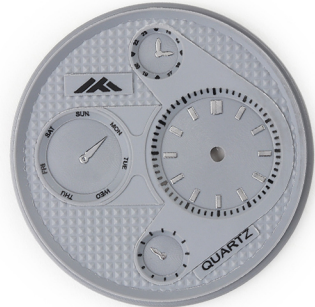
DIAL-6
PDL-105



DIAL-7
MLI DIAL CASE-001



DIAL-8
PDL-107



DIAL-9
PDL-110

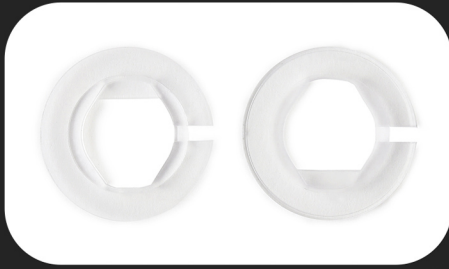


DIAL-10
FASTTRACK

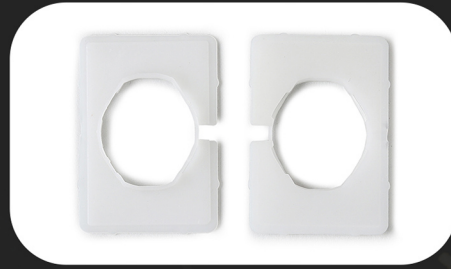


DIAL-11
PDL-102

MOVEMENT HOLDERS



MOV-T-1
29.00/3.5/2030 TRANS



MOV-T-2
23.10X33.10/2.75/VX-50



MOV-T-3
34.30/4.8/AL-33



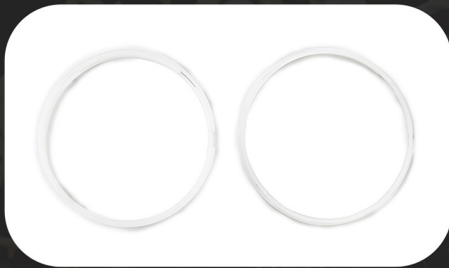
MOV-T-4
NTG-09/VX-32



MOV-T-5
ESG-200/VX-7Y



MOV-T-6
OVAL/2030



MOV-T-7
SKELETON-38.80/4.0



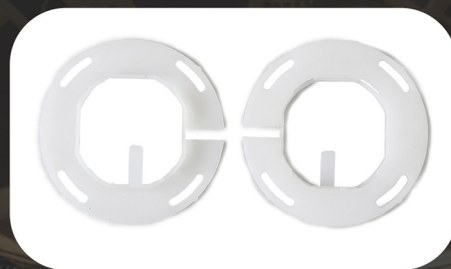
MOV-T-8
ESG-306/VX-3J



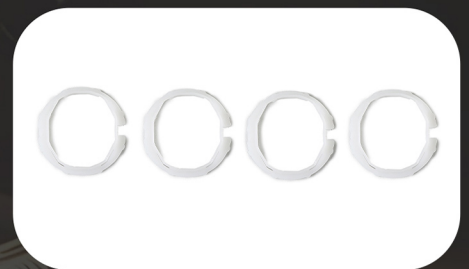
MOV-T-9
25.20X30.00/4.5/2105



MOV-T-10
38.60/6.1/VX-7J



MOV-T-11
PAI-38.30/5.0/2105



MOV-T-12
22.00/4.5/2015



MOV-T-13
HG-03/VX-9J



MOV-T-14
31.20/4.8/AL-33



MOV-T-15
PDL-104

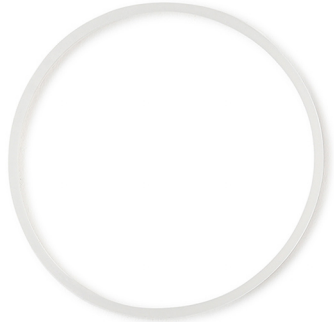
MGG SAMPLES



MGG-1
28.70/2.9



MGG-2
36.30/3.10



MGG-3
31.25/2.9 TRANS



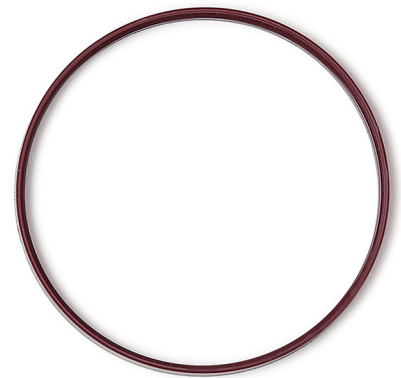
MGG-4
39.00/4.0 BLACK



MGG-5
25.90/25.90/2.8



MGG-6
30.90X30.90/3.2 TRANS



MGG-7
32.54/2.30 BROWN

CASE COLLECTION

CASE 1



BLACK



GREEN



NAVY BLUE



GREY

CASE 2



BLACK



NAVY BLUE



BROWN



GREY

CHRONO CASE



BLACK



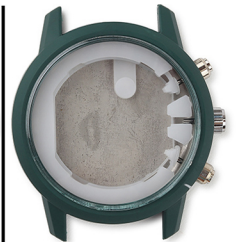
BLUE



GREY



TEAL



DARK GREEN

CASE 4



BLACK



BLUE



GREY



TEAL



GREEN

CASE 5



BLACK



BLUE



GREY



TEAL



GREEN

RINGS COLLECTION



RING-1
M-75



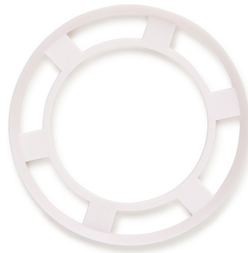
RING-2
27.30/24.50/1.2



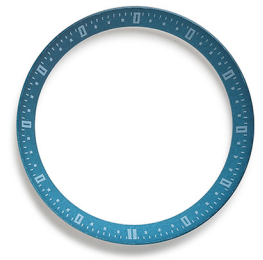
RING-3
U-CUT RING



RING-4
LMX-24G-06



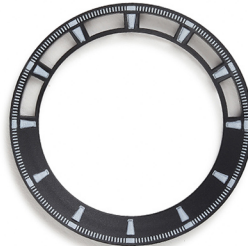
RING-5
JK-141-11



RING-6
M-354/JSH-595



RING-7
M-130



RING-8
M-426/STS-004



RING-9
R-213



RING-10
M-96



RING-11
TOWER



RING-12
D-1241

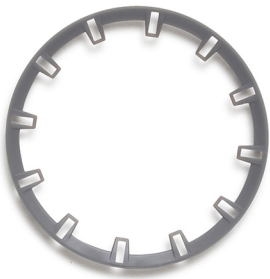


RING-13
ABT FLAT RING



RING-14
M-75

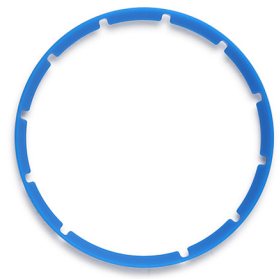
RINGS COLLECTION



RING-15
D-1036A



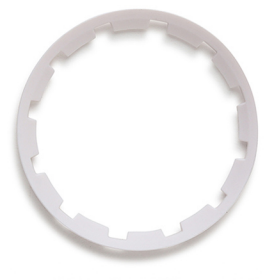
RING-16
PDL-107



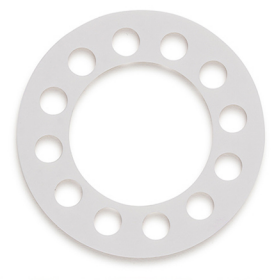
RING-17
D-1185



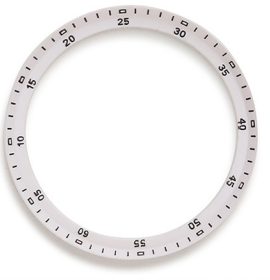
RING-18
PDL-106



RING-19
UR-JK-15A-09



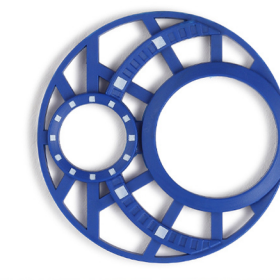
RING-20
12 HOLES



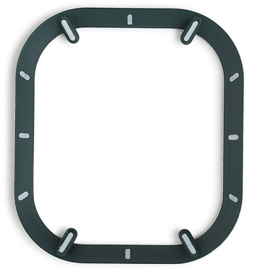
RING-21
M-89



RING-22
DVN-271121



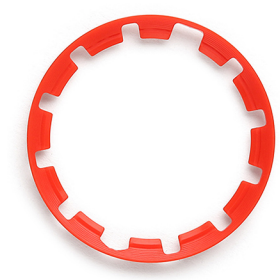
RING-23
PDL-105



RING-24
JIA SQ RING



RING-25
D-864



RING-26
D-1081



RING-27
JSH SQ RING



RING-28
EPR-031

STRAP COLLECTION & PARTS



PU STRAP 1

BLACK

AVAILABLE COLORS -



NAVY BLUE



GREY



GREEN



PU STRAP 2

BLACK

AVAILABLE COLORS -



BLUE



BROWN



NAVY BLUE



TEAL



GREY



OTHERS 1
E-GUARD



OTHERS 2
CHAIN LINK



OTHERS 3
NICKIES LOGO

OUR ESTEEMED CLIENTS



MAST & HARBOUR



Mahalaxmi Industries is a leading manufacturer of high-quality plastic parts for watches, dedicated to providing innovative, durable, and stylish solutions for the watch industry. With years of experience and technical expertise, we have earned the trust of global watch brands through excellence in design, precision, and reliability.

scan here for address



Plot-99, Udyog Kendra Extension-1, Ecotech-3, Greater Noida, UP-201306
contact us at -: 9718726677 , 9711192767
Email Id- admin@mahalaxmiind.in
www.mahalaxmiind.com